



私たち人類の
共通のテーマです

This is a common mission for the humanity

HOME PILE CARRY

ホームパイル キャリー

環境にやさしい基礎工法

Environmentally friendly foundation construction methods



千代田工学株式会社

CHIYODA GEOTECH CO., LTD.

自然にやさしい
基礎工法

The Home Pile Carry, which combines the
'pile' technology cultivated over many years.

The preservation of the Earth's environment is a common theme for all of us humans. Along with technologies that do not harm the environment, there is a strong demand for construction professionals who can provide 'safety and reliability' in foundation pile construction.

Chiyoda Geotech Co., Ltd. has been recognized as a pioneer in the use of non-displacement rotary-driven copper pipe piles, receiving performance evaluations from the Japan Construction Center and obtaining certification from the Minister of Construction. ①Screw Piles ②T・Wing Piles ③K・wing Z Piles ④Screw-in Micro Pile Method certified through joint research with the Ministry of Land, Infrastructure, Transport and Tourism for seismic reinforcement technology.

⑤Connection methods between piles and columns with JR, accumulating a total of over 15,000 construction records.

The Home Pile Carrier, which downsizes these construction methods, plays a 'geo-engineering' role in preventing non-movement subsidence of structures in difficult-to-access places for machinery installation in factories, as well as in residential foundations, expansion foundations, and correction of building subsidence. We provide a comprehensive system from special ground surveys to the design and construction of foundation piles to meet your needs.



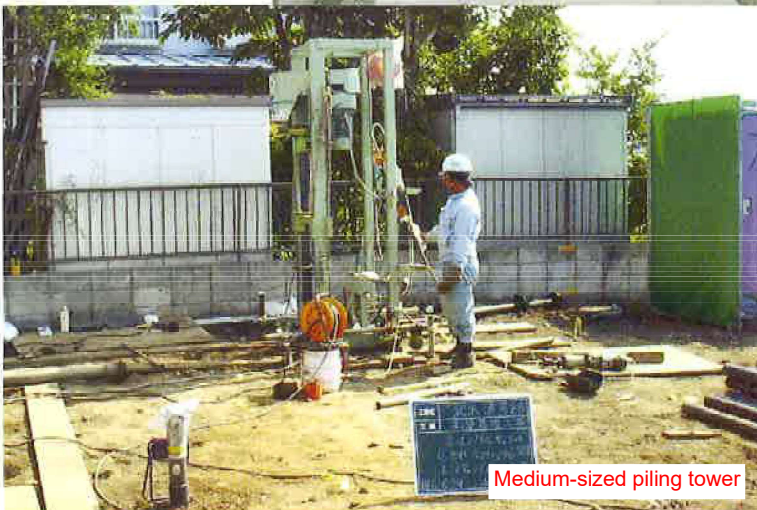
Construction of the JR East Tohoku Main Line platform canopy



Machine access in narrow passageways



Manually carrying in the dismantlable piling tower



Medium-sized piling tower



Constructing with the dismantlable piling tower

Features of the Home Pile Carrier (patents and 5 patent applications in progress)

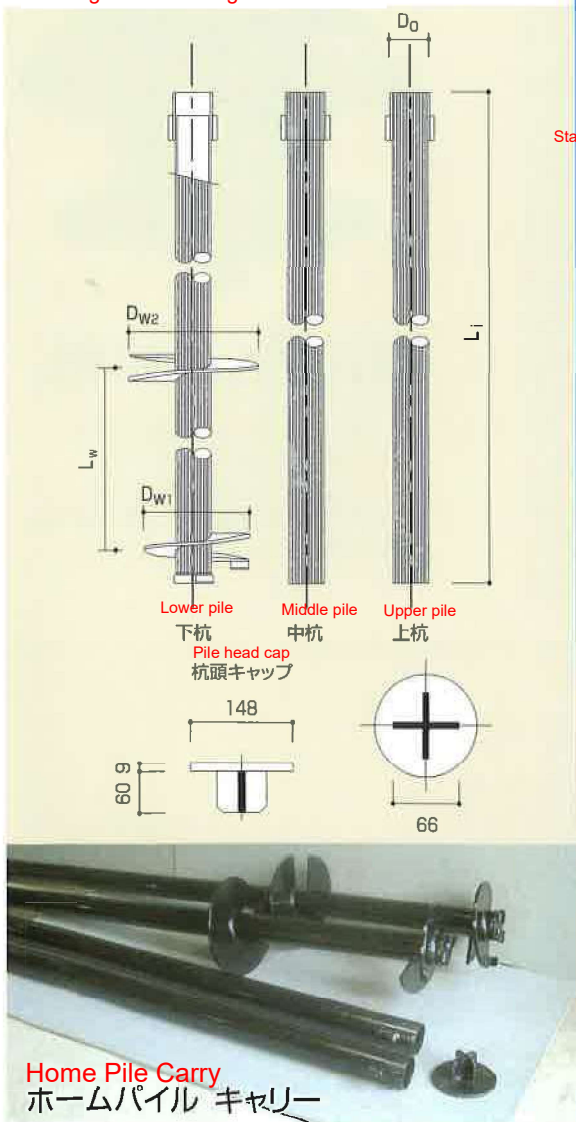
1. The pile body section uses high-quality, stable copper pipe piles with excellent seismic resistance.
2. The unique two-wing design ensures reliable penetration into the supporting layer, providing combined pressure support force.
3. Since we do not use cement milk, there is no concern about groundwater pollution.
4. We maintain harmony with the surrounding environment through low noise, low vibration, and completely non-displacement construction.
5. Construction is easy to perform in narrow spaces or indoors with the dismantlable piling tower that can be carried by hand.



Reinforcement of the foundation after constructing with the Home pile carry

Jack-up for subsidence correction

Subsidence reinforcement while residing in the building



Home Pile Carry
ホームパイル キャリ

Specifications of the Home Pile Carry

(Please consult with our company regarding the selection of pile specifications and the arrangement of piles)

1. Pile dimensions

規格	Diameter	Short pipe length		1st wing part		2nd wing part		Resistance area		※ 杭材の長期許容圧縮強さ	
	径	板厚	単管長	腐食代	第1翼部	第2翼部	翼部	抵抗	面積		
標準	D ₀	t	L ₁	Corrosion allowance	径	板厚	径	板厚	L _w	A _w	
Normal	76.3	3.2	1.5	1.0	230	9	280	9	600	0.0986	6.80
Extra thick		4.2	5.5								10.29

2. Vertical Support force

2. 鉛直支持力

※ 圧縮強さは3本継ぎ(継手2箇所)の場合の値
※ Compressive strength is for the case of three joints (two joint locations).

Average N-value at pile tip 杭先端部平均N値 N		10	11	12	13	14	15
Vertical support force 鉛直支持力	Safety factor 3 安全率3	3.3	3.6	3.9	4.3	4.6	4.9
	Safety factor 2 安全率2	4.9	5.4	5.9	6.4	6.9	7.4

3. Pile diameter

Construction from $\phi 114.3$ to $\phi 265.4$ is possible with the large dismantlable pile tower



ソケット継手
Socket joint



ソケット継手・溶接完了
Welding completed, socket joint

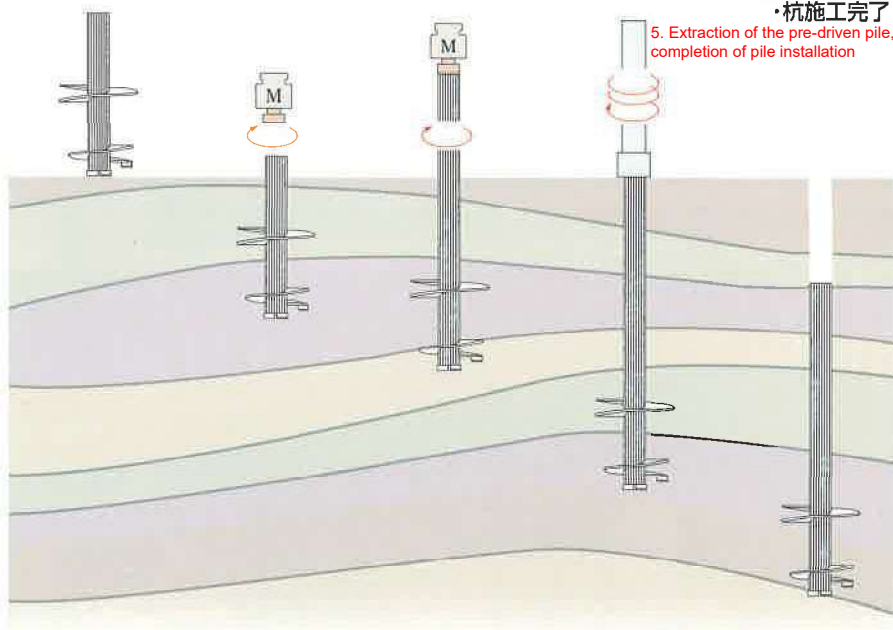


杭頭キャップのセット
Setting the pile head cap

Construction sequence of the Home Pile Carry

ホームパイル キャリーの施工順序

- | | | | | |
|---|--------------------------------|--|--------------------------|--------------------|
| 1. Installation of the pile
1. 杭の建込み | 2. Rotary embedding
2. 回転埋設 | 3. Connection of upper piles
3. 上杭の接続 | 4. Pre-driving
4. 空打ち | 5. 空打杭引抜
・杭施工完了 |
|---|--------------------------------|--|--------------------------|--------------------|



ホームパイル キャリー施工状況
Construction status of the Home Pile Carry

Important notice and request



「ご注意とお願い」

Please note that specifications and appearance of piles or construction machinery may be subject to change without prior notice for product improvement.

For inquiries regarding the contents of this catalog, as well as the capabilities and workability of the construction machinery, please contact our company or our authorized dealers.

This construction method plays a vital role in projects. In the unlikely event of differential subsidence occurring within 5 years of completion, we will apply product liability insurance and provide foundation reinforcement.

<免責事項> Disclaimer

- If problems arise due to designs or constructions that contradict the items described in this catalog.
- If problems arise due to specifications or construction methods specified by the user other than the standard specifications.
- If problems arise due to materials or parts provided by the user other than the standard specifications.
- If problems arise from using the product for purposes or locations not specified in advance.
- If problems arise due to intentional or negligent acts of the user or third parties.
- If problems arise due to modifications made to the structure, performance, specifications, etc. after delivery.
- If problems arise due to failure to promptly report discovered defects, resulting in issues.
- If problems arise due to unforeseen environmental factors (such as high embankments, underground excavation, water level changes) that were not normally anticipated during design and construction.
- If problems arise due to force majeure events beyond what was anticipated during design (natural disasters, earthquakes, ground movement, fire, explosions, etc.).



Strength to the Earth,
Harmony to the Humanity

Since ancient times, the nurturing mother earth has cherished and nurtured the culture and life of humanity.

We continue to challenge ourselves to weave this earth more beautifully and seek interactions that are in line with the times. Supported by teamwork fueled by passion...

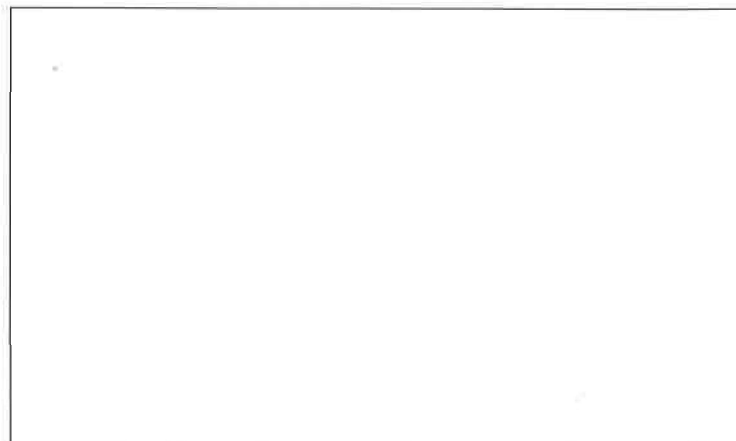


千代田工学株式会社
CHIYODA GEOTECH CO.,LTD.

建設業者登録 国土交通大臣許可 土木工事業 特-12-16451
地質業者登録 国土交通大臣登録 地質調査業 質-13-1642

本社/〒330-0855 埼玉県さいたま市大宮区上小町940
TEL:048-642-4191 (代表) FAX:048-648-0899
E-Mailアドレス: wing-x@pop16.odn.ne.jp
ホームページアドレス: http://www2.odn.ne.jp/chiyoda

札幌事務所 TEL:011-857-4191 FAX:011-857-4196
栃木事務所 TEL:028-639-4191 FAX:048-648-0899
東京事務所 TEL:03-3252-4191 FAX:03-3252-9355
関西事務所 TEL:06-6356-4191 FAX:06-6358-4191
福岡事務所 TEL:0952-32-4191 FAX:092-807-7336
テクノ九州 TEL:0952-52-8778 FAX:0952-52-8970



カタログの内容及び仕様は、変更することがあります。

2006.2-2000

The contents and specifications of the catalog are subject to change.